

DENACOL EX-252, FCA-640, EX-711C

Outline

DENACOL EX-252, FCA-640 are special epoxy resin having alicyclic moiety. It gives high light fastness and high transparency to its cured materials. And, the viscosity of these grades are low compared with BPA type epoxy resin. So, it is easy to handle.

EX-252

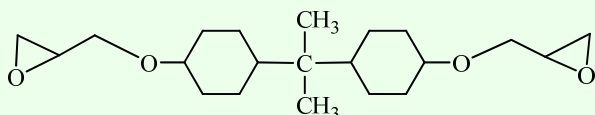
Chemical name Cyclohexanol, 4,4'-(1-methylethylidene)bis-, polymer with (chloromethyl)oxirane

CAS No. 30583-72-3

TSCA Registered

EINECS 500-070-7

Chemical structure



Items	Representative value
appearance	Light yellow liquid
WPE (g/eq)	213
Total Chlorine content (%)	4.5
Viscosity (mPa · s/25°C)	2,200
Color (APHA)	10
Specific gravity (25°C)	1.09

FCA-640

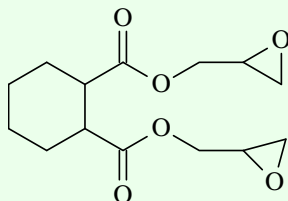
Chemical name Hexahydrophthalic acid diglycidyl ester

CAS No. 5493-45-8

TSCA Registered

EINECS 226-826-3

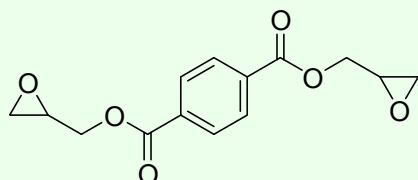
Chemical structure



Items	Representative value
appearance	Light yellow liquid
WPE(g/eq)	164
Total Chlorine content (%)	0.8
Viscosity (mPa · s/25°C)	760
Color (GARDNER)	1
Specific gravity (25°C)	1.22

EX-711C

Chemical name	Bis(2,3-epoxypropyl) terephthalate
CAS No.	7195-44-0
TSCA	Unregistered
EINECS	230-565-0
<input checked="" type="checkbox"/> Chemical structure	



Items	Representative value
appearance	White solid
WPE(g/eq)	150
Total Chlorine content (%)	1.0

Handling and Storage / Other information

Follow the handling precautions and recommendations stated in the Safety Data Sheet (SDS).

Storage in tightly sealed original containers under cool and dry conditions inside a warehouse is recommended.

All persons who use, handle, transport or store these materials need to avoid exposure to them. Adverse health effects from skin irritation to more serious effects can result from the improper use of these materials. Use protective gloves, eye protection shields or safety glasses, and skin creams or lotion. Avoid direct prolonged exposure.

#151014R02E



Nagase ChemteX Corporation
Functional Chemicals Department

<http://www.nagasechemtex.co.jp/>

5-1, Nihonbashi-Kobunacho, Chuo-ku, Tokyo 103-8355, Japan